



Burlington, NC  
Alamance.AACA.com

Volume 23, Issue 89  
December 2024

### December 2024 President's Message

**M**erry Christmas, Happy Holidays, and Happy Anniversary! As we celebrate the Holiday Season, we are also celebrating the 60th anniversary of the Alamance Chapter/Region of the AACA! A small group of antique car enthusiasts gathered at a house in Burlington and decided to start a new chapter of the North Carolina Region. The Alamance Chapter was officially founded in December, 1964. Who could have predicted the success our founders would have, and the growth of the Club to become the first Chapter/Region outside of Hershey to own their own clubhouse? And now we are growing again, with new members and a new clubhouse in process! I am glad that we are laying the foundations for our Club to grow, prosper, and serve our community for another 60 years and beyond!

Please make plans to attend the AACA National Convention this year! The Convention is being held in the Charlotte area, at the Embassy Suites close to the Charlotte Motor Speedway, February 6 – 8, 2025. It is a fantastic opportunity to meet our national directors, officers, HQ and Library staff, as well as to attend some fantastic seminars. There will also be field trips to the NC Transportation Museum and the Rick Hendrick Heritage Center where he has his fantastic collection of classic and performance cars. Lyn St. James will be the keynote speaker at the Friday luncheon hosted by First Lady Audrey Harris. Go to the AACA.org website for information on how to sign up.

Our Christmas Party will be held at the Shiloh Presbyterian Church Sanctuary (not the Scout Hut this time!) on Saturday, December 14, starting at 6:00 pm (get there early so we can start on time!). The Cutting Board is catering the dinner (\$25 per person, payable that night to Jeanne Johnson). Pat and John Cox will have an evening of entertainment for us to enjoy!

Merry Christmas, and Happy New Year to all!

We'll see y'all down the road!

*Rick Holmes*

### News From National

- Be sure to renew your AACA National membership. The renewal card should have been in your last issue of Antique Automobile magazine, but it is easier to renew online at AACA.org.

- The AACA Board of Directors is offering \$5000 grants to Regions hosting national tours or shows.

- The 2025 AACA Annual Convention is coming up soon, so make your registrations and hotel reservations soon! See the national website for details.

- You can schedule a tour of the National HQ building! If you will be in the Hershey area, reach out to Reference Librarian Amoi Goldman to set up your group's tour (agoldman@aaca.org, 717-534-2082).

### December 2024 Treasurer's Report

**O** need to send our roster of paid members to National in January. It would really help if you could bring your 2025 annual dues (\$25 per couple or single) to the Christmas party on December 14. If you are unable to attend, please mail a check payable to Alamance Region AACA to PO Box 565, Mebane, NC 27302. Thank you!

*Jeannie Johnson*

### National and Regional Events: (see [www.aaca.org/events](http://www.aaca.org/events) for full details)

**February 6 - 8 - 2025 Annual Convention, Charlotte, NC**

**2nd Saturdays - Cruise-In at Jimmy's Hotdogs, Mebane**

**3rd Fridays - Cruise-In downtown Graham**



### 2024 Officers

President: Rick Holmes  
919-592-6861

V. President: Donnie Nance  
336-263-0145

Secretary: Mike Blalock  
336-260-7781

Treasurer: Jeannie Johnson  
336-213-0799

### Board of Directors

Ex-Officio: Elizabeth Coble

Terry May 2024-2025

Chuck Smith 2024-2025

Ande Shoe 2025-2026

Scott Wicker 2025-2026

Mickey Kluttz 2025-2026

### Committees

Bldg/Grounds: Richard Holmes  
336-263-3151

Editor: Bruce Anliker  
336-413-7704

Sunshine: Jeannie Johnson  
336-213-0799

Membership: Floyd Smith  
336-228-1526

Chief Judge: Rick Holmes  
919-592-6861

Webmaster: Rick Holmes  
919-592-6861

Youth Coordinator: Rick Holmes  
919-592-6861

### Next Weak Spark Deadline

December Issue 11/30/24

### Next Club Meeting

November 9, 2024

6:00 pm

at Shiloh Presbyterian Church for a meal catered by the Cutting Board.

The meal will be \$25 per person, payable to Jeannie that evening.

## Minutes from the November 2024 Meeting

**T**he Alamance Region met on November 9 at the Scout Hut. This was our Annual Business Meeting. Mickey Klutz stepped in for Rick Holmes who had lost his voice. He opened with the Pledge of Allegiance and a prayer. Mickey thanked the hosts of Larry and Elizabeth Coble and Otto Watson. Upcoming activities are as follows: Haw River Car Show was today; The Village of Brookwood will host a show tomorrow afternoon from 2 pm to 4 pm; Hillsborough Holiday Parade is December 8 at 4 pm (Contact Bill Cox if you want to participate); Veterans Parade was today; December 7 is the Graham Christmas Parade. Let's remember Trent Riley who had knee replacement and the family of Lynn Isley who passed away recently.

Jeanne Johnson gave the Treasurer's report and the budget for 2025. The budget was approved as presented. Elizabeth Coble presented the slate of officers and directors from the Nominating Committee. She introduced each one to the newer members. They are:

President - Rick Holmes, Vice-President - Donnie Nance, Secretary - Mike Blalock, Treasurer - Jeanne Johnson, Board - 2024 to 2025 - Chuck Smith, Terry May (Extend his term one year),

2025 to 2026 - Ande Shoe, Scott Wicker, Mickey Klutz and Ex-Officio - Elizabeth Coble. There were no nominations from the floor so Elizabeth closed the nominations. The slate was approved as presented.

Mickey then proceeded with the choice of the Car for the Plaque for our Car Show in May.

The Board recommended that we use the 1950's White Jaguar of Butch McKenzie. Butch has done so much of preparing our land for a new Clubhouse for free. The motion carried.

Ande Shoe gave an update on the Clubhouse Building. He stated the bricks are there and water and sewer connections are at the road. We are waiting on approval of plans by the County. Mickey thanked Ande for supervising the building of our facility. Under other business, our Christmas Party will be held on December 14 at 6:00 pm. We will meet at Shiloh Presbyterian Church. Pat Cox asked for some volunteers to help with a skit and she also plans to present a slide show of members who have passed. The meal is being catered by the Cutting Board and will cost \$25.00 per person. There will also be a singer and we will sing Carols. Jeanne also reminded everyone that dues are \$25.00 per year for singles or couples.

National dues are \$45.00 and can be paid on-line or sent with your form from your last Magazine. Larry Coble also reminded everyone that Max and Scott Wicker's Mustang has been nominated for a National Award.

The meeting was adjourned,

*Elizabeth Coble* for *Mike Blalock*

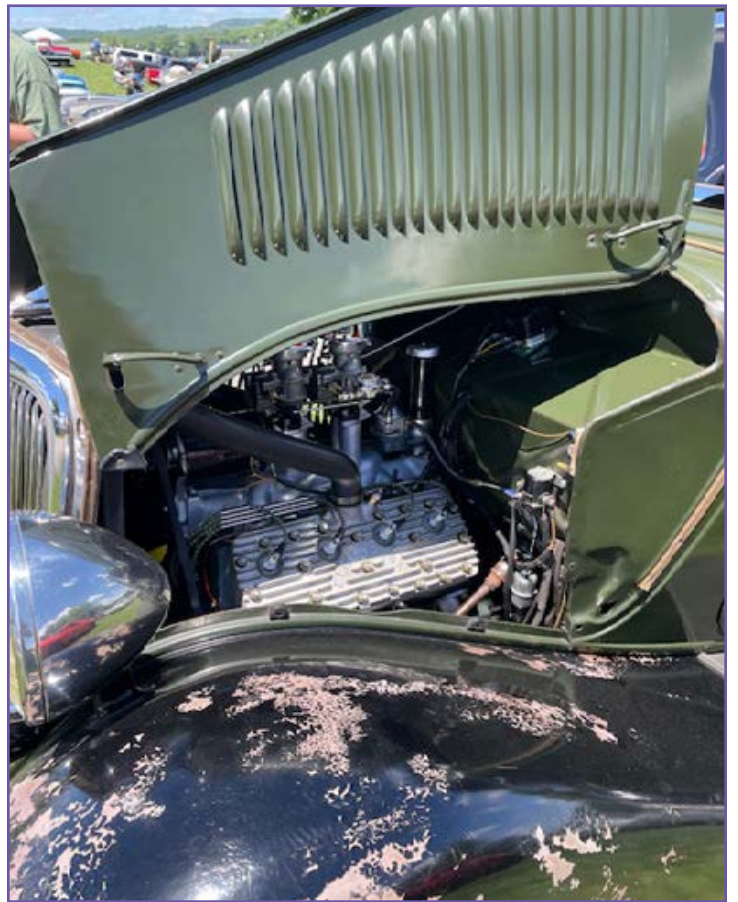
### AACA National Activities Calendar

<b>February 6-8, 2025</b>	<b>Annual Convention</b>	<b>Charlotte, NC</b>	<b>July 2-5, 2025</b>	<b>Central Spring Nationals</b>	<b>Auburn, IN</b>
<b>April 3-5, 2025</b>	<b>Southeastern Spring Nationals</b>	<b>Charlotte, NC</b>	<b>July 24-26, 2025</b>	<b>Grand Nationals/ Zenith</b>	<b>Dayton, OH</b>
<b>May 1-5, 2025</b>	<b>Western Spring Nationals/Grand Nationals</b>	<b>Tuscon, AZ</b>	<b>August 12-15, 2025</b>	<b>Eastern Divisional Tour</b>	<b>Aroostook County, ME</b>
<b>June 1-7, 2025</b>	<b>Vintage Tour</b>	<b>Southern/ Eastern PA</b>	<b>September 7-12, 2025</b>	<b>79th Revival AAA Glidden Tour® Hosted by VMCCA</b>	<b>Owensboro, KY</b>
<b>June 19-21, 2025</b>	<b>Eastern Spring Nationals</b>	<b>Beckley, WV</b>			



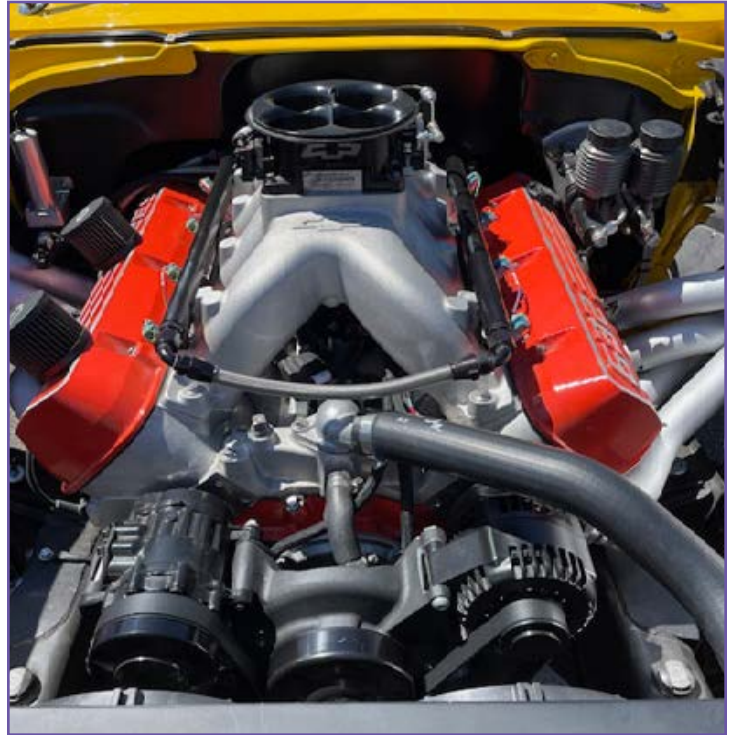


The 2024 Hot Rod Power Tour!





The 2024 Hot Rod Power Tour!





The 2024 Hot Rod Power Tour!



Photos courtesy of  
*Henry Gaither, Jr.*



## Hey Bruce, wanna drive a Model A?

**A**fter recently admitting that I'd love to have a 1929 Model A tudor due to seeing Bill Thele make his way through modern traffic on his way to work in his Tudor in my hometown, I received an unexpected offer... Rick and Richard Holmes made me an incredible offer I couldn't refuse—"Hey, Bruce, wanna drive a Model A?"

Well, no self-respecting car guy could ever turn down such an offer, so I readily accepted! It was a beautiful summer day with clear skies when I made my way to Richard's building where he houses some of his collection of vintage beauties, and a gleaming black roadster awaited.

Following some basic instruction to get this newbie familiarized with how to go about starting a Model A, and getting me settled in behind the wheel, we were off! To simply explore some less-traveled side streets in Haw River. In a gorgeous black Model A roadster no less!

The first thing that was difficult for this Model A neophyte to get acclimated to was the non-synchronized manual transmission in Model As. Yep, I have been spoiled by the more modern fully-synchronized manual transmission cars I've driven.

Rick tells me that I did well, but the "blip of the throttle, move the shifter out of gear, blip the throttle to move the shifter to the next gear" left me feeling like I ground at least a half pound of hamburger in the gearbox. Between that and the fairly heavy non-power steering, wow, I had no idea your hands and feet would be so busy driving an old A! There would definitely be far fewer drivers playing on their cellphones if we were all still driving Model As!

As it turned out Rick was a wonderful driving instructor and we shared a pleasant drive in spite of my gear-grinding activities. So now it's on to my quest... where might I find a clean old 1929 Model A Tudor? Even a '30 would do. More importantly, how do I



convince Bobbie to let me make another old car acquisition? That'll be the toughest part! Any pointers guys?

## In Memorium

*Ande & Mary Shoe*  
Thankful for Answered Prayers!



In Memory Of  
*Judy Cox*  
By John & Pat Cox

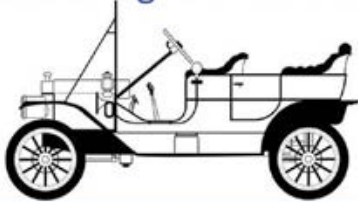


## In Memorium

In Memory Of

*Katie & E. B. Dawson*

By granddaughter Lou Ann Smith



In Memory Of

*Tal Johnson*

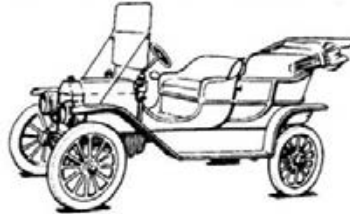
By Jeannie Johnson



In Memory Of

*Jean & WR Smith, Jr.*

By their son Chuck Smith



**The *Weak Spark* is brought to you thanks to these fine sponsors!**

*A. B. Capps*

*Properties & Consultants*

1504 Whites Kennel Rd. Burlington NC 27215

**CAROLINA**

Tank Lines, Inc.

www.carolinatanklines.com

The *Acorn Suites*

*Executive Extended Stay Hotel*

914 South 5<sup>th</sup> St.  
Mebane, NC 27302  
919-560-9005

www.acornsuites.com  
reservation@acornsuites.com

 **State Farm**

Adam Parker, Agent

1183 University Drive Suite 103  
Burlington, NC 27215-8315  
Bus 336.584.9231 Fax 336.584.9233  
adam@adamparkerinsurance.com

www.adamparkerinsurance.com



*Providing Insurance and Financial Services*

**ALAMANCE  
GLASS**

202 Alamance Rd.  
Burlington, NC 27215  
- FREE ESTIMATES -

Carly Albright  
Customer Service

(336) 227-6694  
Fax (336) 570-2038  
www.alamanceglass.com



# The *Weak Spark* is brought to you thanks to these fine sponsors!

**Mark Greeson, President**

Bus 336-228-9654 • Cell 336-213-4435 • Fax 336-229-1908  
521 East Webb Avenue • Burlington, NC 27217  
alastarter@bellsouth.net



NEW & REMAN STARTERS, ALTERNATORS & GENERATORS  
SALES PARTS SERVICE

**Insurance Answers for Seniors**



**Bill & Susan  
Cauthren**

265 S. Cobb Ave, Burlington, NC 27217

**MedicareScream.com AliantMarketing.com**

Bill@AliantMarketing.com 336-437-0000  
Cauthren@email.com 336-226-9466



Post Office Box 2314  
Burlington, North Carolina 27215

**GENE KIMREY** Phone: 336/226-5896  
apco@bellsouth.net Fax: 336/229-4782  
associatedplumbingcompany.com

**BATTLEGROUND TIRE & WRECKER**  
336-227-2991



6204 NC 62 South  
Burlington, NC 27215

[www.battlegroundwrecker.com](http://www.battlegroundwrecker.com)

**BETTY ANDREWS  
INVESTMENT MANAGEMENT**

3120 S. Church St. • Suite 102 • Burlington, NC 27215

**Brooke T. Carpenter** LPL Financial Advisor

336-584-9955 • 336-584-0076 fax • 336-380-5847 cell  
brooke.carpenter@lpl.com • text to 336-361-1989

*Securities and advisory services offered through LPL Financial,  
a Registered Investment Advisor, Member FINRA/SIPC*

[www.bettyandrewsinvestmentmanagement.com](http://www.bettyandrewsinvestmentmanagement.com)



**Roberto Baltazar**  
Operator

[bv180@biscuitville.com](mailto:bv180@biscuitville.com)  
336.270.6153  
2619 Alamance Road  
Burlington, NC 27215



**Eric Harrell**

1222 S. Church St.  
Burlington, NC 27215  
[www.blackstire.com](http://www.blackstire.com)

Phone: (336) 228-1796  
Fax: (336) 229-1790  
[eric.harrell@blackstire.com](mailto:eric.harrell@blackstire.com)





The *Weak Spark* is brought to you thanks to these fine sponsors!

# BROOKS

MANUFACTURING SOLUTIONS, INC.

TROY BROOKS

1327 N. CHURCH STREET, BURLINGTON N.C. 27217

CELL 336.263.4136 OFFICE 336.567.2014

TROYBMS@GMAIL.COM

WWW.BMSCONTROLPANELS.COM

# Burlington RENTALS

2280 S Church Street, Suite 205 Burlington, NC 27215

phone-336.228.7368 emergency-336.516.6000

email-BurlingtonRentalsNC@gmail.com

www.BurlingtonRentalsNC.com



COSMETIC AUTOMOTIVE RESTORATION SERVICES  
& ACCESSORY SHOWROOM

**BARRY RHUE**

953 S. Mebane Street  
Burlington, NC 27215  
Fax: (336) 570.3598  
(336) 570.2323



www.carandtruckware.com

- Paintless Dent Removal
- Paint Touch-up & Scratch Repair
- Windshield Repair
- Interior Repair & Dyeing
- Window Tinting
- Customizing & Accessorizing

FREE ESTIMATES & INSPECTIONS

# CASTLE ROOFING

336.499.0445

CastleRoofingNC.com



**Central Carolina  
Concrete, LLC.**

296 S Edwardia Drive Greensboro, NC 27409

336-315-0777

# CHISHOLM SERVICE

Heating - Air Conditioning - Refrigeration

www.chisholmservice.com

336-228-0571



**David Simmons II**  
Sales Manager

**Crenshaw Hyundai Inc**  
330 Huffman Mill Road  
Burlington, NC 27215  
www.crenshawhyundai.net

Office: 336-584-1144  
Cell: 336-380-4072  
Fax: 336-343-4776  
david@hyundaicrenshaw.com



**RICK FISHER, CFP®, MSFP**  
Managing Partner

3120 South Church St., Suite 101, Burlington, NC 27215  
rick.fisher@lpl.com | Tel: 336.532.4396 | Fax: 336.532.4400  
Securities offered through LPL Financial, MEMBER FINRA/SIPC



The *Weak Spark* is brought to you thanks to these fine sponsors!

In Honor of

*Floyd & Elsie Smith*

By Bob & Jane Smith



**F & H APPLIANCE**

Sales • Service • Parts

1328 E. Webb Ave. • Burlington, NC 27217  
(336) 227-0189 • Fax (336) 570-2280

Monday - Friday 7:30am - 5:00pm

**Gibsonville Complete Lawn Care**  
A Hometown Touch

Michael Belvin      336-338-1323



**Kimbers**  
STEAKHOUSE

230 W Main St, Gibsonville, NC 27249

(336)-449-6411

kimberssteakhouse@gmail.com

**KIRKPATRICK**  
CONCRETE  
of Burlington, Inc.

P.O. Box 400 • Alamance, North Carolina 27201

G.H. KIRKPATRICK III (TRIPP)  
President  
email: ghkcc@yahoo.com

Office (336) 226-0021  
Mobile (336) 260-4102  
Fax (336) 226-0228

**JORDAN LAMBETH**  
MANAGER

**LAMBETH ASPHALT SERVICES LLC**

8110 BROOKS LAKE ROAD  
BROWNS SUMMIT, NC  
(336)932-4392

JORDANLAMBETH@BELLSOUTH.NET



- ✓ Windows  
Walls, Composite, Clay
- ✓ Entry Doors
- ✓ French Doors
- ✓ Patio Doors

**Joe Johnson**

Project Guide  
Joe@LeapWindows.com

TRIAD: (336) 742-LEAP  
TRIANGLE: (919) 822-LEAP  
EASTERN NC: (252) 787-LEAP

LEAPWINDOWS.COM



FAMILY OWNED. NORTH CAROLINA COMPANY



**Leland Little**

COLLECTOR CARS AT AUCTION

LelandLittle.com • 919-644-1242 • 429 Cornerstone Ct., Hillsborough, NC



The *Weak Spark* is brought to you thanks to these fine sponsors!



**CHEVROLET | CADILLAC**  
of BURLINGTON

Dennis Gregory  
General Manager

2616 Alamance Road  
Burlington, NC 27215

Toll Free: 1-800-273-0542  
Ph: 336-229-5501  
Cell: 336-269-2882  
Fax: 336-222-5935

dgregory@modernauto.com  
www.ModernAuto.com



**MAZDA**  
of BURLINGTON

Tim Holliday  
General Manager

Modern Mazda of Burlington  
2608 Alamance Road  
Burlington, NC 27215

Toll Free: 1-800-273-0542  
Ph: 336-229-5501  
Fax : 336-229-0179  
Cell : 336-580-0316

tholliday@modernauto.com  
www.modernmazdaofburlington.com



Chuck Phillips III  
Store Manager

2452 Tribek Court  
Burlington, NC 27215

Work Phone: (336)227-4009  
Work Phone 2: (336)227-4309  
Fax: (336)227-4304  
Cell Phone: (336)437-3918

PROUD MEMBER OF



www.oreillyauto.com



Al & Shirley  
Cimino  
(336) 226-4757

Best Donuts, Cakes, Pastries & Pies in Town

FB: Paul's Pastry Shop NC  
paulspastrync@gmail.com

720 S. Church St. Burlington, NC 27215



120 W. Main St  
Gibsonville, NC  
27249

336-603-6004

**PRIM & PAWPER**  
Pet Spa and Boutique

primandpawper21@gmail.com



**HEAD OFFICE:** 37160 Cone Club Rd  
Gibsonville, NC 27249  
**PHONE** 336-350-1450

Tim Clark

**Sir Speedy**

Printing and Marketing Services

1257 South Church St.  
Burlington, NC 27215

C 336.269.2703

P 336.227.1227

F 336.226.8102

tclark@sirspeedyburlington.com

www.sirspeedy.com/burlington



**Smiley  
Plumbing  
Company** LLC™

treyton@smileypumbingcompany.com  
(336)-937-2264

smileypumbingcompany.com



The *Weak Spark* is brought to you thanks to these fine sponsors!



Need Seat Covers?

**S&S Auto Trim**

*Two Generations of Experience*

Automotive Interiors • Install Sunroofs • Vinyl Roofs & Convertible Tops • Boat Seats & Tops • Airplane Interiors Custom Work • Headliners

Ray Smith  
(336) 226-6048 • Cell: 212-0799

1905 E. Webb Ave.  
Burlington, NC 27217

We Also Do Interiors In  
Aircraft Carriers, Battleships  
& Submarines



**Sunshine Realty**  
PROPERTY MANAGEMENT

830 chapel Hill Rd  
Burlington, NC 27215  
ncsunshinerealty.com

336-226-2345  
leasing@ncsunshinerealty.com  
maintenance@ncsunshinerealty.com

**TERRY HOUSE BBQ**

947 Fisher Ferry St  
Thomasville, NC 27360  
336-475-1628



Steve Detter, RPh  
Robbin Lee, RPh  
Broughton Sellers, RPh  
Bridget Robertson, CPhT

*The Prescriptions You Need, The Care You Deserve.*

2479 S. Church Street  
Burlington, NC 27215  
www.TotalCareBurlington.com

336-570-CARE (2273)  
FAX: 336-350-8534  
info@TotalCareBurlington.com



2233 BELLEFONT | ALAMANCE ROAD  
BURLINGTON | NC 27215



+1 336 584 6988  
+1 919 933 4998  
INFO@NCTREESAREUS.COM  
WWW.NCTREESAREUS.COM

**TREES ARE US**



P.O. Box 2450  
Burlington, NC 27216  
1745 Burch Bridge Road  
Burlington, NC 27217  
wbag@bellsouth.net

JOE GRAY  
Owner/Manager

Phone: 336-226-1150  
Fax: 336-226-1180  
Cell: 336-263-7370

**Western Charcoal Steak House**

142 N. Graham-Hopedale Rd.  
Burlington, NC 27217  
**(336) 227-1448**



xtremeconcrete3@gmail.com

**336-938-5190**